



# You asked. We Listened. We Delivered!

## Find out what's new & what's improved in sympac

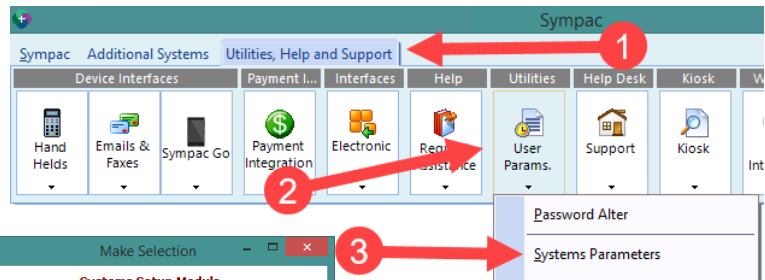
### Product Dashboard

The Product Dashboard is an interface which displays all of the relevant information about a product on a single screen. It can currently be accessed through *F10 More Details* in Point of Sale, and in *Product Search* windows.

#### Enabling the Dashboard

Navigate through the menu

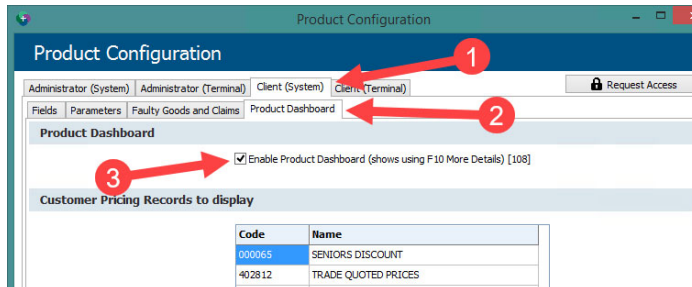
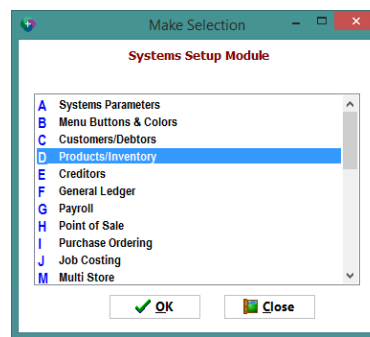
1. Utilities, Help and Support
2. User Params.
3. System Parameters



#### Select D Products/Inventory

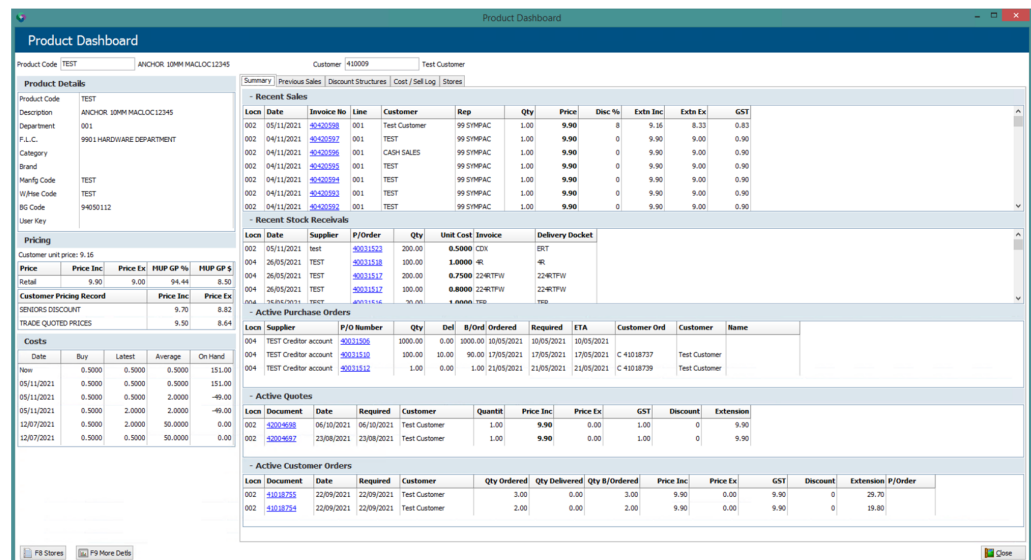
Navigate to

1. Client (System)
2. Product Dashboard
3. Check the option 'Enable Product Dashboard'



In this area you can also set up a set of **Customer Pricing Records** to display on the **Product Dashboard**. This is a handy feature if you have accounts setup with discounts that you need to frequently review against!

### Example Product Dashboard



Check out our Quick Ref Guides & our YouTube Channel for more information.

Vxssrw#1633#694#: 65#1#5356#. #W\ P OSDF#Vroxwlrqv#Sw|#Dwg#