



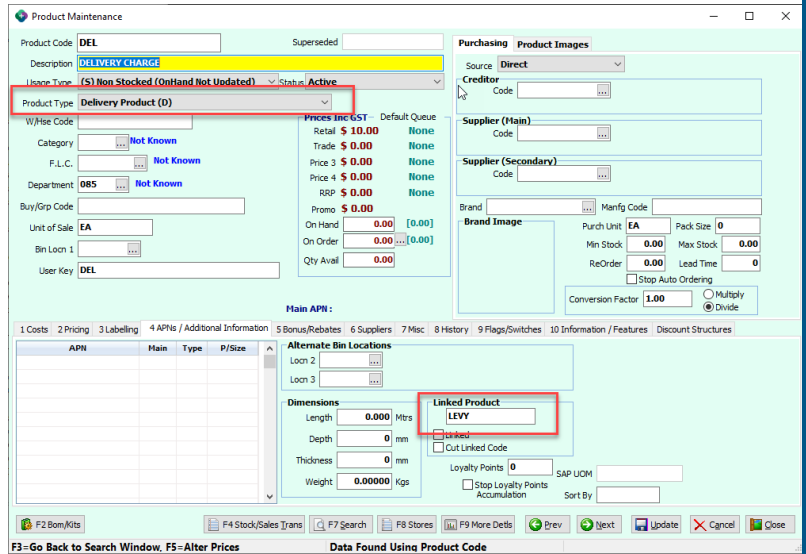
# You asked. We Listened. We Delivered!

## Find out what's new & what's improved in *sympac*

### Delivery Charge Levy

POS has a new feature that allows you to link delivery products to a delivery levy product. This is available in the **linked product** field on the **delivery product**.

The Levy product itself can be either a normal (retail price is used for the levy charge) or **% product**, where the levy charge is a percentage of the delivery charge price.



Any method of triggering the delivery charge will additionally trigger the levy to be added to the POS document.

Product Code	Description	Qty	Price Inc	Uom	Dsc %	Req'd	Extension	%
673256	PINE LINING ROM 302 140X12 2.4M	1	9.49	Each		28-03-22	9.49	C
DEL	DELIVERY PRODUCT	1	20.00	Each			20.00	A
LEVY	LEVY PRODUCT	1	1.00	Each		28-03-22	1.00	K